



College of Europe
Collège d'Europe

Brugge



Natolin

POSTGRADUATE INSTITUTE OF EUROPEAN STUDIES



NATOLIN CAMPUS

Why choose the College of Europe in Natolin?

- ▲ A postgraduate advanced Master of Arts in European Interdisciplinary Studies
- ▲ A one-year bilingual academic programme in English and French
- ▲ A focus on "Wider Europe" and on the EU's relations with its nearest neighbours
- ▲ Language courses and a tailor-made professional skills programme
- ▲ High-level events with VIP guests throughout the academic year
- ▲ Many partial or full scholarships available



Around 130 students from about 30 countries

130  **30** 
students countries

About 100 professors and practitioners from over 25 nationalities

100  **25** 
lecturers nationalities

A wonderful campus in a 120-hectare nature reserve and historical park in Warsaw

120 
hectares

2 inspiring study trips in the EU and its neighbourhoods

2 
study trips

A network of over 13,700 College of Europe alumni

13,700 
alumni

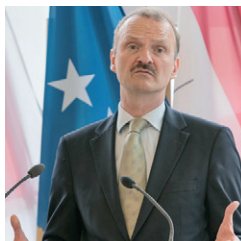
History

The College of Europe, established on the initiative of the Hague Congress, dates back to 1949 and is the oldest and one of the most prestigious institutes of European studies.

The idea was to establish an institute where university graduates from many different European countries could study and live together in preparation for careers related to European cooperation and integration.

“ Ever since its foundation, the College of Europe has had the mission to make well selected postgraduate students ready for leadership functions requiring a strategic understanding of European issues.

Jörg Monar - Rector



Cutting-edge education

Renowned professors, small group teaching and a challenging mix of professional skills and language training, as well as study trips and international competitions, define the College's extremely varied academic programme.

World leaders and international opinion makers are regular guest speakers and enter into challenging discussions with students on European and international affairs.

“ The College of Europe aims to prepare its students for a life of dedication and service. During their year of studies, our students build together a true community of diversity and mutual respect.

Ewa Ośniecka-Tamecka - Vice-Rector



1948

The Hague Congress: Salvador de Madariaga, Winston Churchill, Paul Henri Spaak and Alcide de Gasperi, among others, decide to found the College of Europe

1949

Establishment of the first College of Europe campus in Bruges, Belgium, offering postgraduate studies and training in European affairs

1992

Establishment of the second College of Europe campus in Natolin (Warsaw), Poland, at the time of the reintegration of the European continent after the fall of the Iron Curtain

“ This College of Europe at Natolin is more than the symbol of Europe found once again, it is the hope represented in this beautiful historic place. The hope that exchanges can multiply for greater mutual understanding and fraternity.

Jacques Delors - Former President of the European Commission



The College of Europe in Natolin with its postgraduate advanced **Master of Arts in European Interdisciplinary Studies** provides young professionals and future leaders with **the wider perspective on Europe**



A Broader Programme

A first-class interdisciplinary programme taught by around 100 leading academics and practitioners from Europe and beyond

Intensive training in:

- ▲ EU Governance
- ▲ EU Law
- ▲ European Economic Integration
- ▲ Geopolitics
- ▲ International Security
- ▲ Regional Studies
- ▲ History, Societies, Identities
- ▲ Intercultural Communication

100 leading academics and practitioners

A Deeper Insight

Four comprehensive specialisations providing key expertise in the internal and external dimensions of European affairs, customisable according to students' interests:

- ▲ EU Public Affairs and Policies
- ▲ The EU in the World
- ▲ The EU and its Neighbours
- ▲ European History and Civilization

Study trips, international competitions, high-level lectures and VIP events providing field experience and expertise on current European challenges

A Sharper View

Thorough academic preparation, combined with language courses and a professional skills programme designed for today's competitive job market

- ▲ One-to-one career tutorials
- ▲ Professional skills workshops
- ▲ Networking events
- ▲ Language courses in English, French, Italian, German, Spanish, Polish and Russian

“ Studying at the College illuminates your career path. Being part of this unique community empowers your personal and professional background. And finally, it is an extremely challenging, but absolutely rewarding experience that will help define yourself and your future.

Gabrielle Bulgari - Falcone & Borsellino Promotion (2014-2015)



Because Europe is out there, and is an adventure to be lived

A Further Step

Two inspiring study trips in the EU and its neighbourhoods, immersing students in topical issues on the ground with decision makers, key experts and leading representatives of civil society



1 study trip

in the **first semester**
for all students

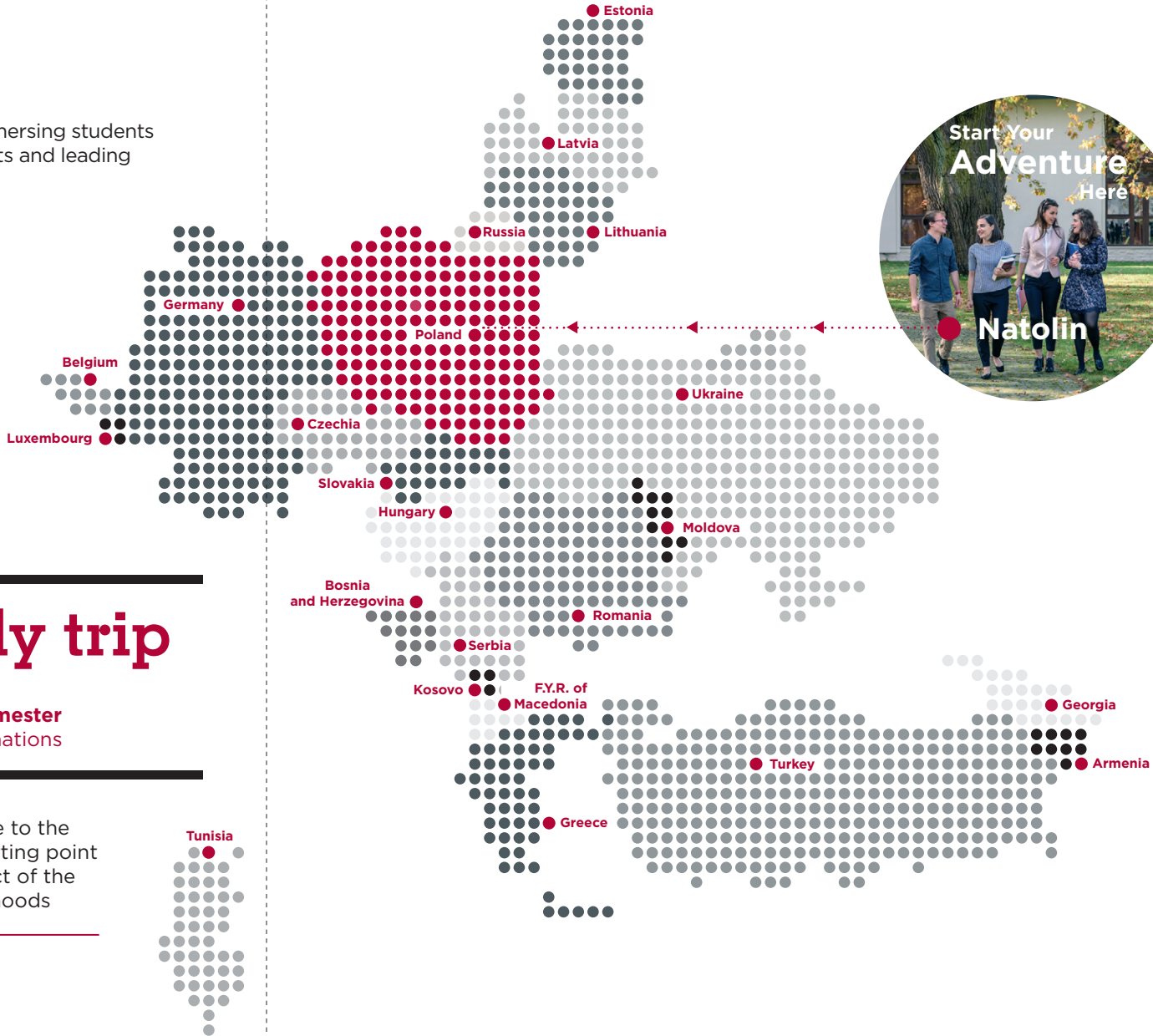
1 study trip

in the **second semester**
4 available destinations

The location of the Natolin campus in Poland, a country close to the Eastern frontier of the European Union, makes it an ideal starting point for the exploration of the political and socio-economic impact of the EU in Central and Eastern Europe and in the EU's neighbourhoods

We believe that Europe must be learned and understood on the field. We have a long and successful history of tailor-made study trips designed for Natolin students

Some of our previous destinations include:



A Dynamic City

Warsaw: A growing and vibrant metropolis boasting a wealth of history and culture, and an ideal starting point to discover Central and Eastern Europe



- ▲ The capital of Poland since 1596
- ▲ UNESCO World Heritage site
- ▲ Business and research hub
- ▲ FRONTEX Headquarters
- ▲ OSCE's Office for Democratic Institutions and Human Rights



A student community of almost 250,000 people with more than 65,000 international students



High standards of accommodation on a wonderful campus within a historic, picturesque 120-hectare nature reserve, just a stone's throw away from the city center



- ▲ Single fully equipped student rooms
- ▲ Natolin Restaurant - 3 meals a day, 7 days a week

- ▲ Gym
- ▲ Sauna
- ▲ Recreational spaces
- ▲ Outdoor sport facilities



A Greener Location



Warsaw

Natolin

Student life at Natolin - a source of unforgettable memories for a lifetime

A Richer Experience



A multicultural community of around 130 students from more than 30 countries living, learning, and experiencing Europe together on one campus

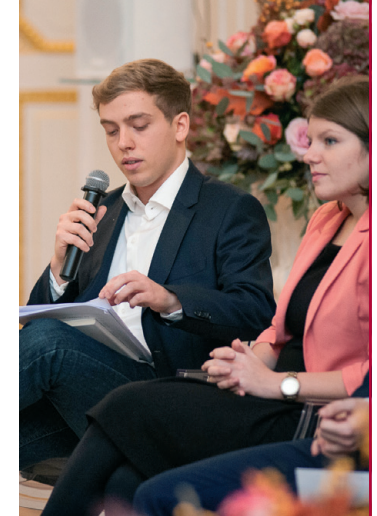
30 countries
130 students

Thematic Hubs and Student Societies

- ▲ Human Rights in a Digital Era
- ▲ Energy Governance
- ▲ Revolutions and Social Movements
- ▲ Natolin Academy of Migration



TEDx College of Europe Natolin



“As in many postgraduate universities you can learn a lot in classrooms, but what you cannot learn elsewhere and what makes Natolin a unique place is the people that you meet and what you can learn about Europe by living together, by eating together, by studying together, by being part of this vibrant and very diverse community.

Marc Naether - Politkovskaya & Dink Promotion (2007-2008)

Natolin Blog

Welcome to Europe 360°

National Days

A real showcase of diversity

An innovative research and development environment

European Neighbourhood Policy Chair

Focuses on "Wider Europe" and on the EU's relations with its nearest neighbours, particularly the countries covered by the European Neighbourhood Policy

International Seminars

Natolin Neighbourhood Days



Development Service

A long track-record in providing tailored and successful executive education and training to a wide range of participants, also by means of e-learning platforms

From 5 to 500 participants

European Civilization Chair

Encourages reflection on European history in the conviction that understanding Europe's past helps us to imagine and shape Europe's future

International Conferences

Three Ukrainian Revolutions



Natolin Library

One of the largest European Studies libraries with extensive printed and electronic collections



Over 44,000 titles

A Bigger Network

High-level lectures with VIP guests throughout the year give our students the opportunity to meet and discuss with world leaders

“ The College of Europe in Natolin has a strong reputation for being at the cutting edge of the academic debate on Europe.

Alexander Stubb - Former Prime Minister of Finland (Ramon Llull Promotion, 1994-1995)

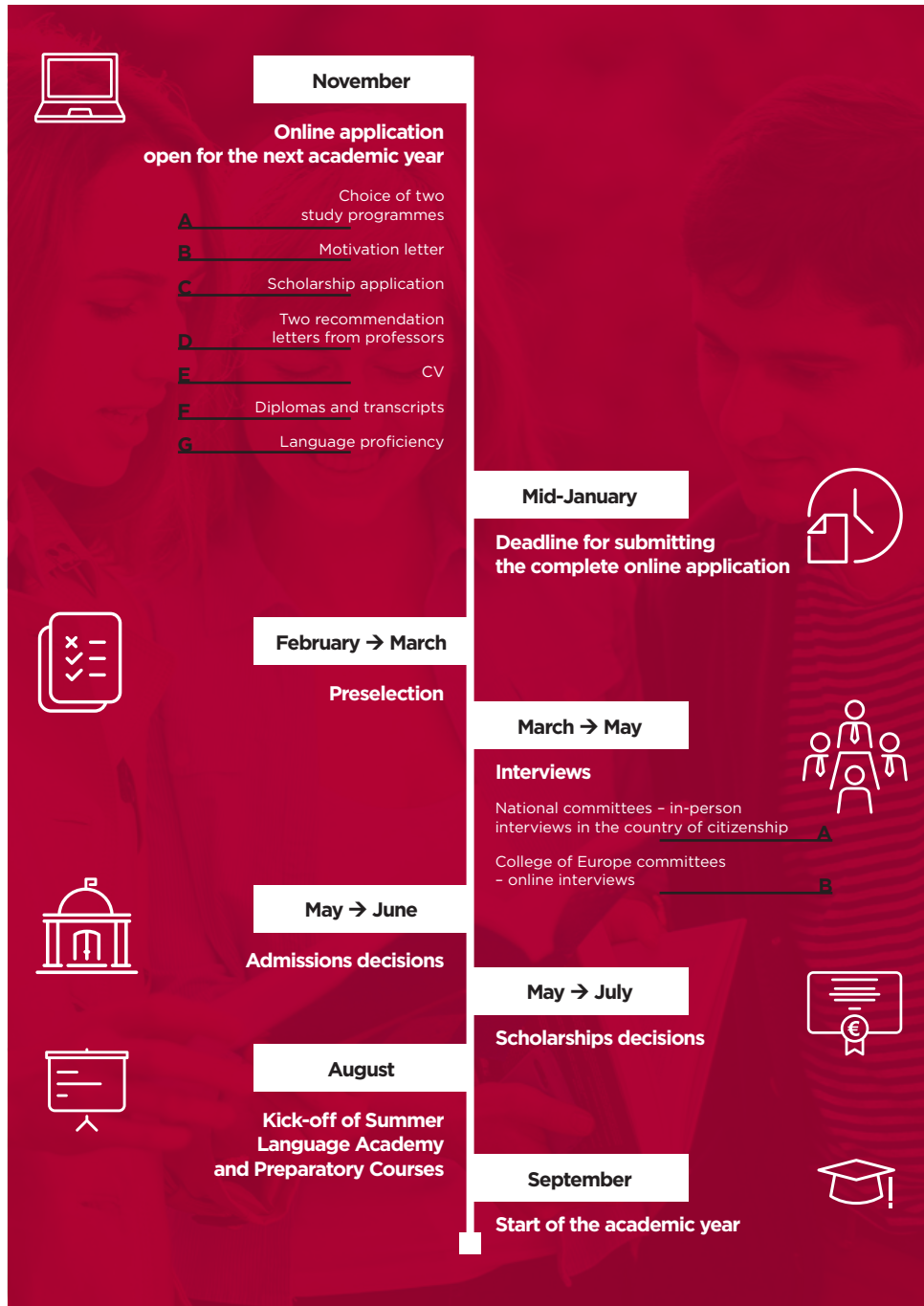


A wealth of career destinations



- ▲ Companies, consultancies and trade associations
- ▲ EU institutions and EU agencies
- ▲ Public sector (national, regional and subregional)
- ▲ Academic institutions and think tanks
- ▲ Law firms
- ▲ NGOs, trade unions and other organisations
- ▲ International organisations and United Nations
- ▲ Diplomatic service and permanent representations to the EU

Become a student



Admission requirements

- ▲ Bologna Master's degree or equivalent (240 ECTS)
- ▲ Knowledge of English and French
- ▲ Interest in EU affairs

The European Interdisciplinary Studies programme is aimed at university graduates with an academic background in a varied range of disciplines, such as law, economics, political or social sciences, history, philosophy, geography, linguistics or journalism, and who are interested in approaching the process of European integration from a broad and interdisciplinary perspective.

Graduates with degrees in other disciplines (such as natural sciences, engineering etc.) who demonstrate a high academic level and a keen interest in EU affairs are also encouraged to apply.



The study programme corresponds to a total of 66 credits (ECTS)

Master of Arts in Transatlantic Affairs (MATA) A unique joint degree

The 21st century brings with it numerous complex challenges for the United States and the European Union. These challenges have to be taken up by a new generation of leaders across public and private sectors. This 2-year joint Master of Arts, in cooperation with The Fletcher School of Law and Diplomacy at Tufts University, prepares graduates for positions in transatlantic leadership.

“ Natolin is an experience that you will never forget. It is an experience for a lifetime that will help you form yourself into the human you want to be.

Kevin Broby Kristiansen - Simone Veil Promotion (2017-2018)

Fees and scholarships

At the Natolin campus of the College of Europe the fees of 25,000€ include: tuition, board and lodging, registration, examinations and the study trips.

Many of our students are granted partial or full scholarships by their government, public or private institutions or by the College of Europe itself.

To learn more about all the available scholarship schemes, please visit our website:

www.coleurope.eu/scholarships



Thanks to support from the European Union, the College of Europe in Natolin offers the following scholarships (ranging from partial to full):

European History and Civilization Scholarships

Beneficiaries:

- ▲ Candidates from all nationalities
- ▲ Graduates in history and related disciplines

Eligibility:

- ▲ On the basis of motivation and merit

European Neighbourhood Policy Scholarships (EU citizens)

Beneficiaries:

- ▲ Candidates from EU countries
- ▲ Interested in the European Neighbourhood Policy

Eligibility:

- ▲ On the basis of motivation and merit

Approximately **70%** of
College of Europe students
are granted scholarships

European Neighbourhood Policy Scholarships (ENP countries citizens)

Beneficiaries:

- ▲ Candidates from Algeria, Armenia, Azerbaijan, Belarus, Egypt, Georgia, Israel, Jordan, Lebanon, Libya, Moldova, Morocco, Palestine, Syria, Tunisia or Ukraine

Eligibility:

- ▲ On the basis of motivation and merit



College of Europe
Collège d'Europe

Brugge



Natolin

Widen your perspective!

BECOME PART OF THE COLLEGE NETWORK
COLEUROPE.EU/SOCIALHUB



With the support of the
Erasmus+ programme

The project has been funded with support
from the European Commission

COLLEGE OF EUROPE IN NATOLIN

College of Europe | Ulica Nowoursynowska 84 | 02-797 Warsaw | Poland
T +48 22 54 59 500 / 401 | F +48 22 54 59 352 | contactnatolin@coleurope.eu

COLEUROPENATOLIN.EU
COLEUROPE.EU